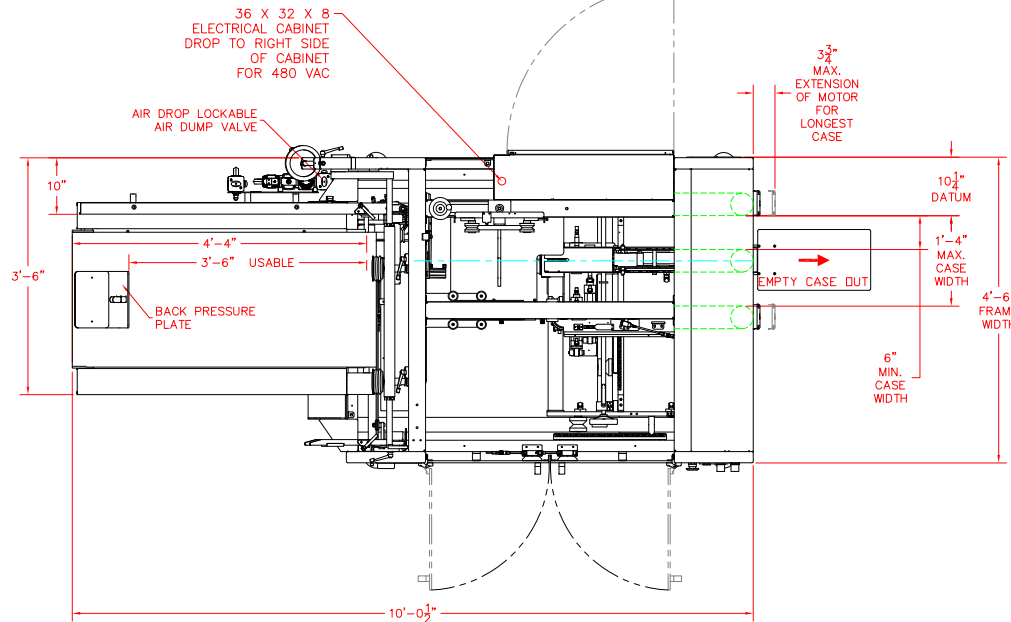
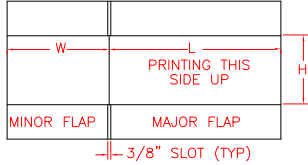
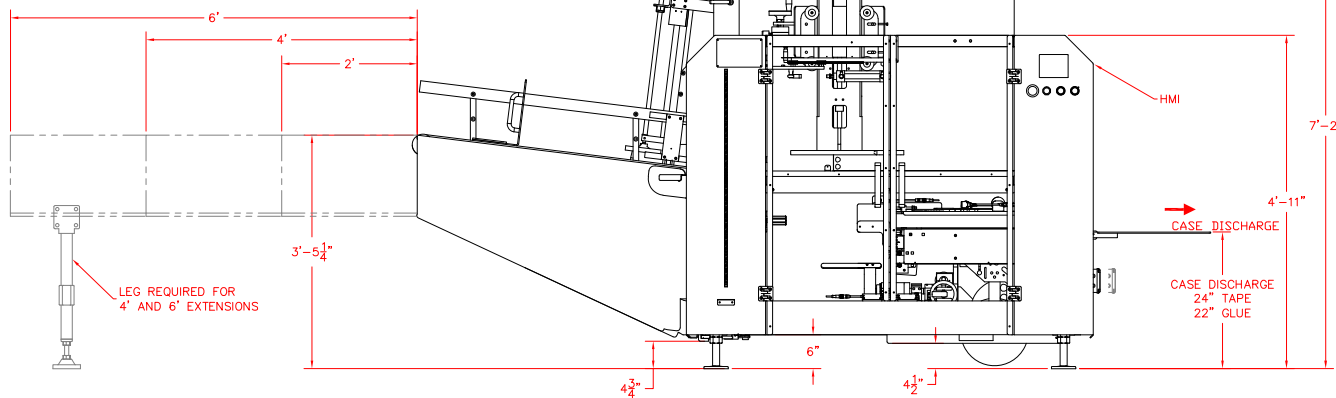


CASE ORIENTATION FOR FALLAS
MODEL CE-400-RIGHT HAND
CASE ERECTOR



MAGAZINE EXTENSIONS
AVAILABLE



ZONE	REV	DESCRIPTION	REVISIONS	DATE	DRAFTSMAN

STANDARD SPECIFICATIONS FOR TAPE
ELECTRICAL : 120VAC, 1 PH, 60 HZ, 15 AMP FUSED
MOTOR : 1/2 HP
CONTROLS : AB MICROLOGIX 1500
OIT : PANEL VIEW 300
AIR : 1/2" INLET 5 CFM at 80 psi
TAPE HEAD : DEKKA 22
WEIGHT : 2,000 LBS

STANDARD SPECIFICATIONS FOR GLUE

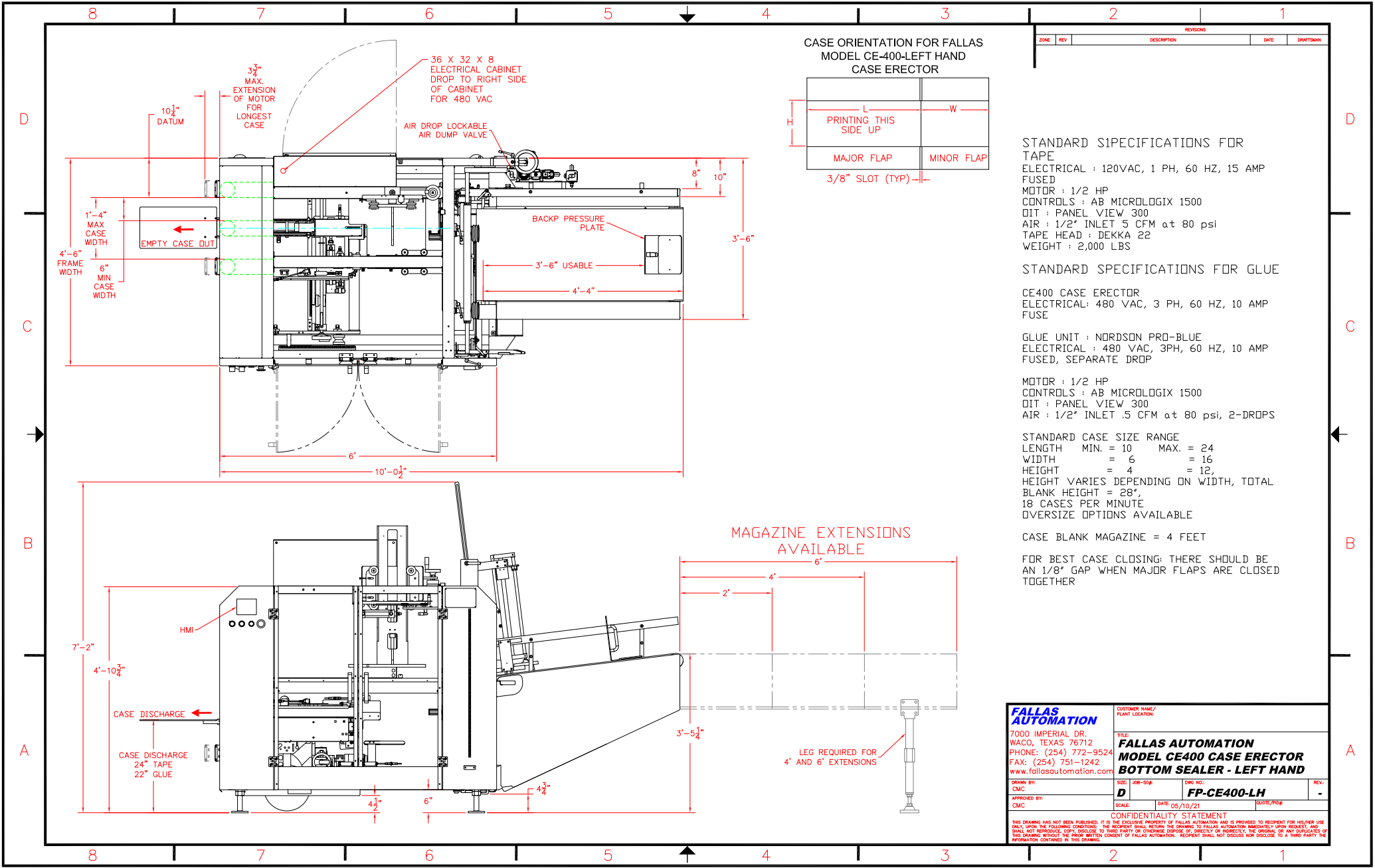
CE400 CASE ERECTOR
ELECTRICAL: 480 VAC, 3 PH, 60 HZ, 10 AMP FUSE
GLUE UNIT : NORDSON PRO-BLUE
ELECTRICAL : 480 VAC, 3PH, 60 HZ, 10 AMP FUSED, SEPARATE DROP
MOTOR : 1/2 HP
CONTROLS : AB MICROLOGIX 1500
OIT : PANEL VIEW 300
AIR : 1/2" INLET .5 CFM at 80 psi, 2-DROPS

STANDARD CASE SIZE RANGE
LENGTH MIN. = 10 MAX. = 24
WIDTH = 6 = 16
HEIGHT = 4 = 12,
HEIGHT VARIES DEPENDING ON WIDTH, TOTAL BLANK HEIGHT = 28",
18 CASES PER MINUTE
OVERSIZE OPTIONS AVAILABLE

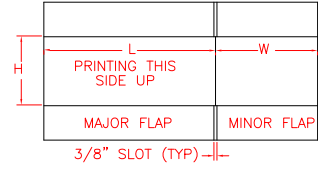
CASE BLANK MAGAZINE = 4 FEET

FOR BEST CASE CLOSING: THERE SHOULD BE AN 1/8" GAP WHEN MAJOR FLAPS ARE CLOSED TOGETHER

FALLAS AUTOMATION 7000 IMPERIAL DR. WACO, TEXAS 76712 PHONE: (254) 772-9524 FAX: (254) 751-1242 www.fallasautomation.com	CUSTOMER NAME/ PLANT LOCATION:
	TITLE: FALLAS AUTOMATION MODEL CE400 CASE ERECTOR BOTTOM SEALER - RIGHT HAND
DRAWN BY: CMC	JOB-NO: D
APPROVED BY: CMC	DWG NO.: FP-CE400-RH
SCALE: 05/10/21	REV: -
CONFIDENTIALITY STATEMENT <small>THIS DRAWING HAS NOT BEEN PUBLISHED. IT IS THE EXCLUSIVE PROPERTY OF FALLAS AUTOMATION AND IS PROVIDED TO RECIPIENT FOR HIS/HER USE ONLY. UPON THE FOLLOWING CONDITIONS: THE RECIPIENT SHALL RETURN THE DRAWING TO FALLAS AUTOMATION IMMEDIATELY UPON REQUEST, AND SHALL NOT REPRODUCE, COPY, DISCLOSE TO THIRD PARTY OR OTHERWISE DISPOSE OF, DIRECTLY OR INDIRECTLY, THE ORIGINAL OR ANY DUPLICATES OF THIS DRAWING WITHOUT THE PRIOR WRITTEN CONSENT OF FALLAS AUTOMATION. RECIPIENT SHALL NOT DISCLOSE TO A THIRD PARTY THE INFORMATION CONTAINED IN THIS DRAWING.</small>	



CASE ORIENTATION FOR FALLAS MODEL CE400-LEFT HAND CASE ERECTOR



ZONE	REV	DESCRIPTION	REVISIONS	DATE	DRAFTSMAN

STANDARD SPECIFICATIONS FOR TAPE
 ELECTRICAL : 120VAC, 1 PH, 60 HZ, 15 AMP FUSED
 MOTOR : 1/2 HP
 CONTROLS : AB MICROLOGIX 1500
 OIT : PANEL VIEW 300
 AIR : 1/2" INLET 5 CFM at 80 psi
 TAPE HEAD : DEKKA 22
 WEIGHT : 2,000 LBS

STANDARD SPECIFICATIONS FOR GLUE
 CE400 CASE ERECTOR
 ELECTRICAL : 480 VAC, 3 PH, 60 HZ, 10 AMP FUSE

GLUE UNIT : NORDSON PRO-BLUE
 ELECTRICAL : 480 VAC, 3PH, 60 HZ, 10 AMP FUSED, SEPARATE DROP
 MOTOR : 1/2 HP
 CONTROLS : AB MICROLOGIX 1500
 OIT : PANEL VIEW 300
 AIR : 1/2" INLET .5 CFM at 80 psi, 2-DROPS

STANDARD CASE SIZE RANGE
 LENGTH MIN. = 10 MAX. = 24
 WIDTH = 6 = 16
 HEIGHT = 4 = 12,
 HEIGHT VARIES DEPENDING ON WIDTH, TOTAL
 BLANK HEIGHT = 28",
 18 CASES PER MINUTE
 OVERSIZE OPTIONS AVAILABLE

CASE BLANK MAGAZINE = 4 FEET

FOR BEST CASE CLOSING: THERE SHOULD BE AN 1/8" GAP WHEN MAJOR FLAPS ARE CLOSED TOGETHER

FALLAS AUTOMATION 7000 IMPERIAL DR. WACO, TEXAS 76712 PHONE: (254) 772-9524 FAX: (254) 751-1242 www.fallasautomation.com	CUSTOMER NAME/ PLANT LOCATION:	
	FALLAS AUTOMATION MODEL CE400 CASE ERECTOR BOTTOM SEALER - LEFT HAND	
DRAWN BY: CMC	SIZE: JOB-SIZE D	DWG NO.: FP-CE400-LH
APPROVED BY: CMC	SCALE:	DATE: 05/10/21
CONFIDENTIALITY STATEMENT <small>THIS DRAWING HAS NOT BEEN PUBLISHED. IT IS THE EXCLUSIVE PROPERTY OF FALLAS AUTOMATION AND IS PROVIDED TO RECIPIENT FOR HIS/HER USE ONLY. UPON THE FOLLOWING CONDITIONS: THE RECIPIENT SHALL RETURN THE DRAWING TO FALLAS AUTOMATION IMMEDIATELY UPON REQUEST, AND SHALL NOT REPRODUCE, COPY, DISCLOSE TO THIRD PARTY OR OTHERWISE DISPOSE OF, DIRECTLY OR INDIRECTLY, THE ORIGINAL OR ANY DUPLICATES OF THE DRAWING WITHOUT THE WRITTEN CONSENT OF FALLAS AUTOMATION. RECIPIENT SHALL NOT DISCLOSE NOR DISSEMINATE TO A THIRD PARTY THE INFORMATION CONTAINED IN THE DRAWING.</small>		