

ZONE		REV	DESCRIPTION	REVISIONS	DATE	DRAFTSMAN

120 VAC, 60Hz, 15AMP
POWER DROP

STANDARD SPECIFICATIONS FOR CS400 TAPE SEALER

CONSTRUCTION: STAINLESS STEEL WITH SS NEMA 4X ENCLOSURES

ELECTRICAL: 120 VAC, 1 PHASE, 60 Hz, FUSED @ 15 AMPS

MOTOR: 1/2 HP

PLC: AB MICROLOGIX 1400**

OIT: PUSHBUTTON**

AIR: 1/2" INLET, 1 CFM @ 80 PSI

TAPE HEAD: DEKKA 22**

SPEED: UP TO 25 CASES PER MINUTE

**OPTIONS AVAILABLE

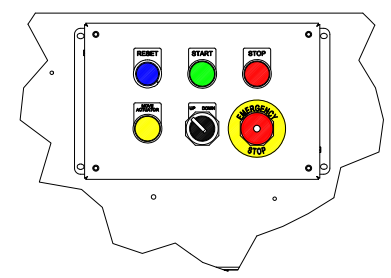
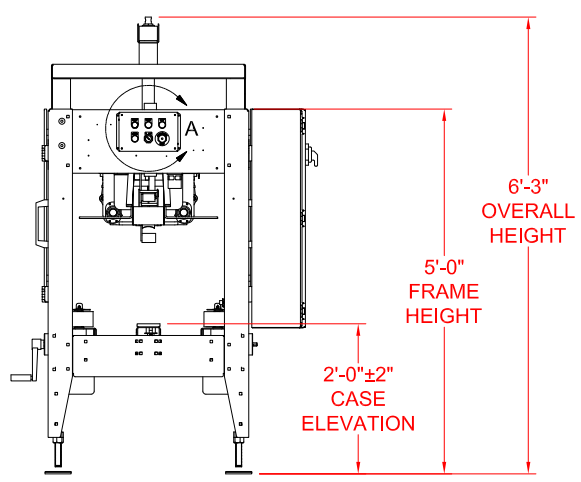
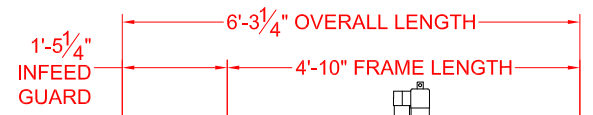
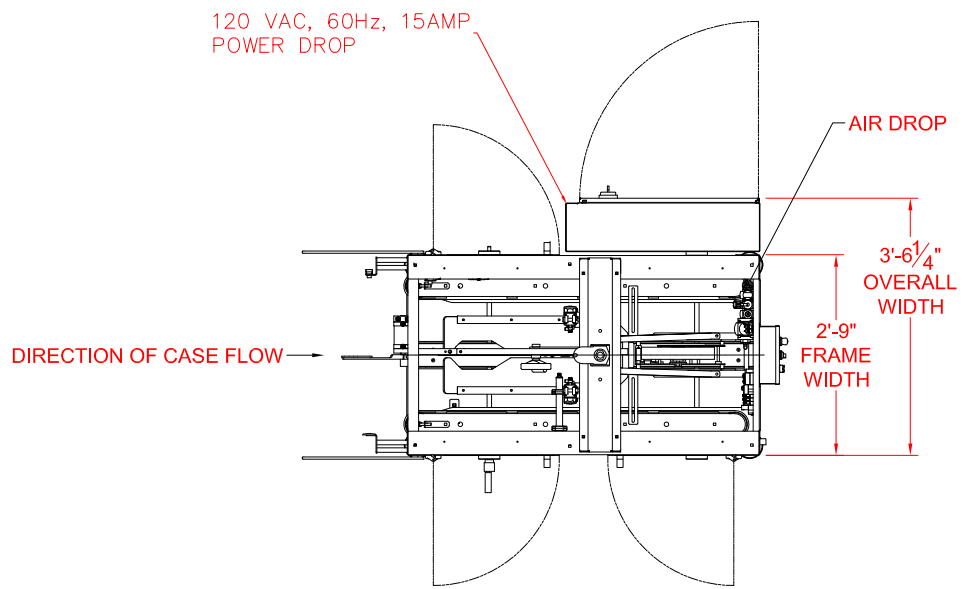
CASE SIZE RANGE: OTHER SIZES AVAILABLE, CONSULT SALES

LENGTH MIN = 10 MAX = 24

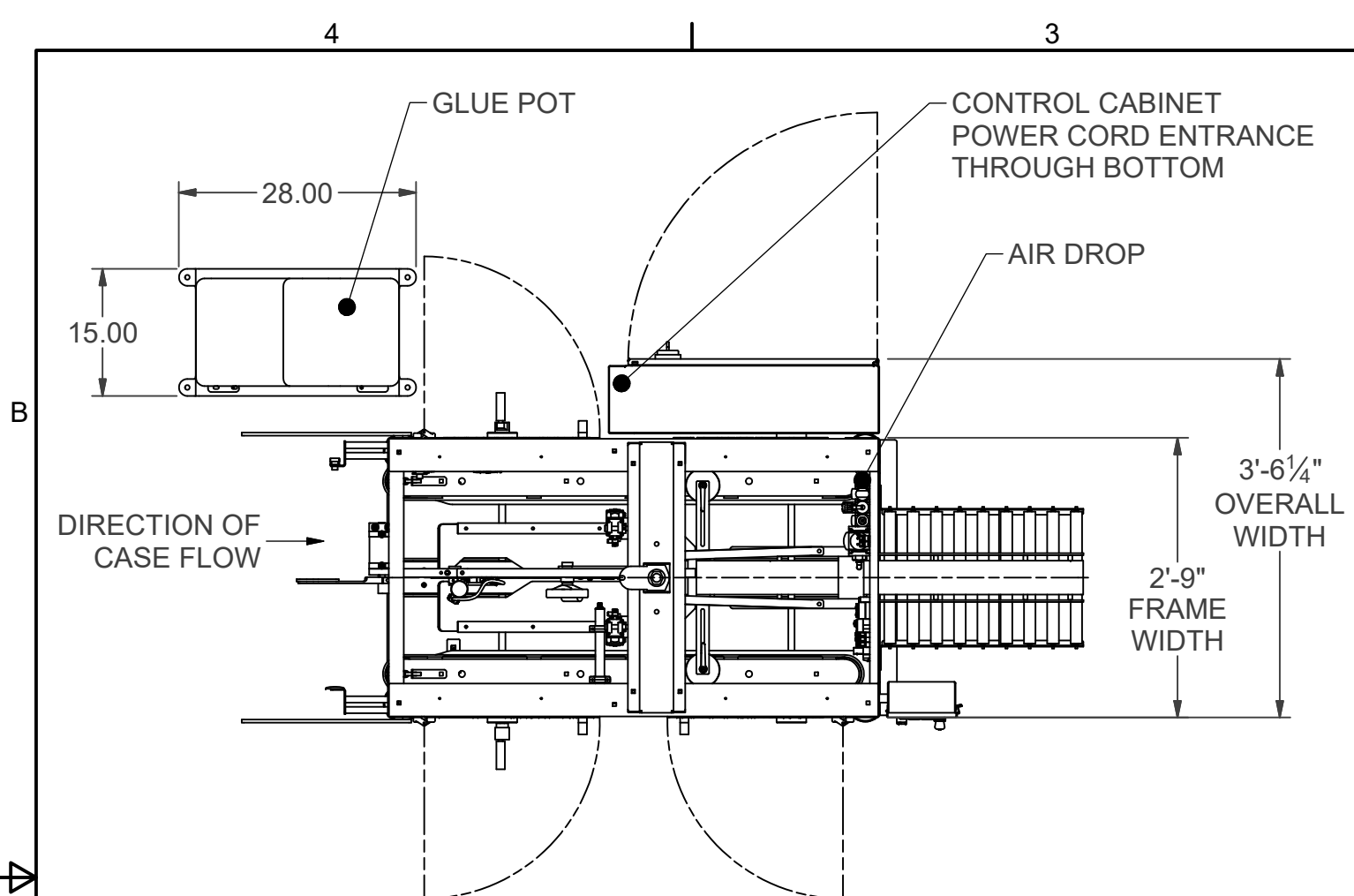
WIDTH MIN = 6 MAX = 16

HEIGHT MIN = 4 MAX = 12

FOR BEST CASE CLOSING THERE SHOULD BE A 1/8" GAP
BETWEEN MAJOR FLAPS WHEN CLOSED



FALLAS AUTOMATION 7000 IMPERIAL DR. WACO, TEXAS 76712 PHONE: (254) 772-9524 FAX: (254) 751-1242 www.fallasautomation.com	CUSTOMER NAME/ PLANT LOCATION:	
	MODEL CS400 AUTOMATIC CASE TOP CLOSER TAPE SEALER	
DRAWN BY: CMC	SIZE: JOB-SOP D	DWG NO.: CS400
APPROVED BY: CMC	SCALE: 	DATE: 01/29/21
CONFIDENTIALITY STATEMENT <small>THIS DRAWING HAS NOT BEEN PUBLISHED. IT IS THE EXCLUSIVE PROPERTY OF FALLAS AUTOMATION AND IS PROVIDED TO RECIPIENT FOR HIS/HER USE ONLY. FROM THE FOLLOWING CONDITIONS: THE RECIPIENT SHALL RETURN THE DRAWING TO FALLAS AUTOMATION IMMEDIATELY UPON RECEIPT, AND SHALL NOT REPRODUCE, COPY, DISCLOSE TO THIRD PARTY OR OTHERWISE DISPOSE OF, DIRECTLY OR INDIRECTLY, THE ORIGINAL OR ANY DUPLICATES OF THIS DRAWING WITHOUT THE PRIOR WRITTEN CONSENT OF FALLAS AUTOMATION. RECIPIENT SHALL NOT DISCLOSE NOR DISCLOSE TO A THIRD PARTY THE INFORMATION CONTAINED IN THIS DRAWING.</small>		



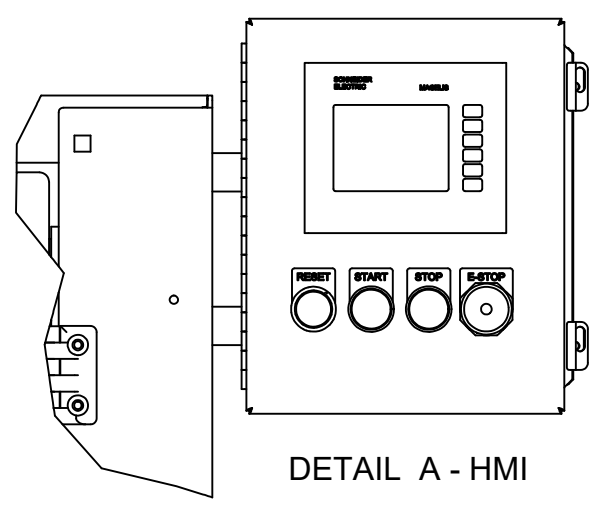
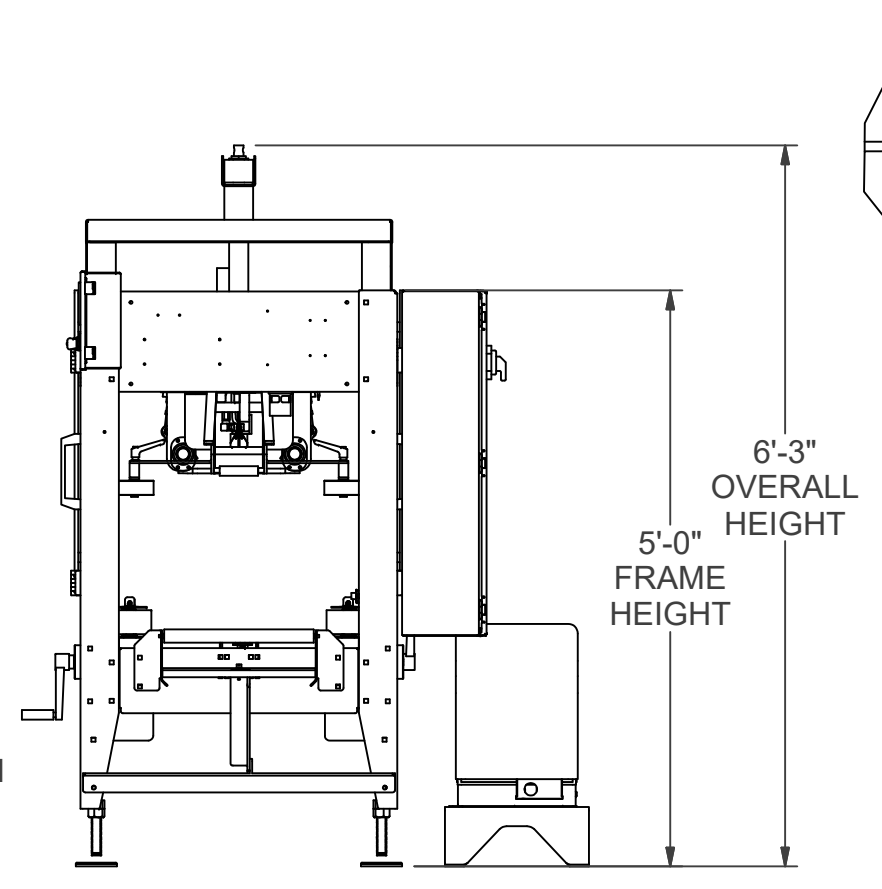
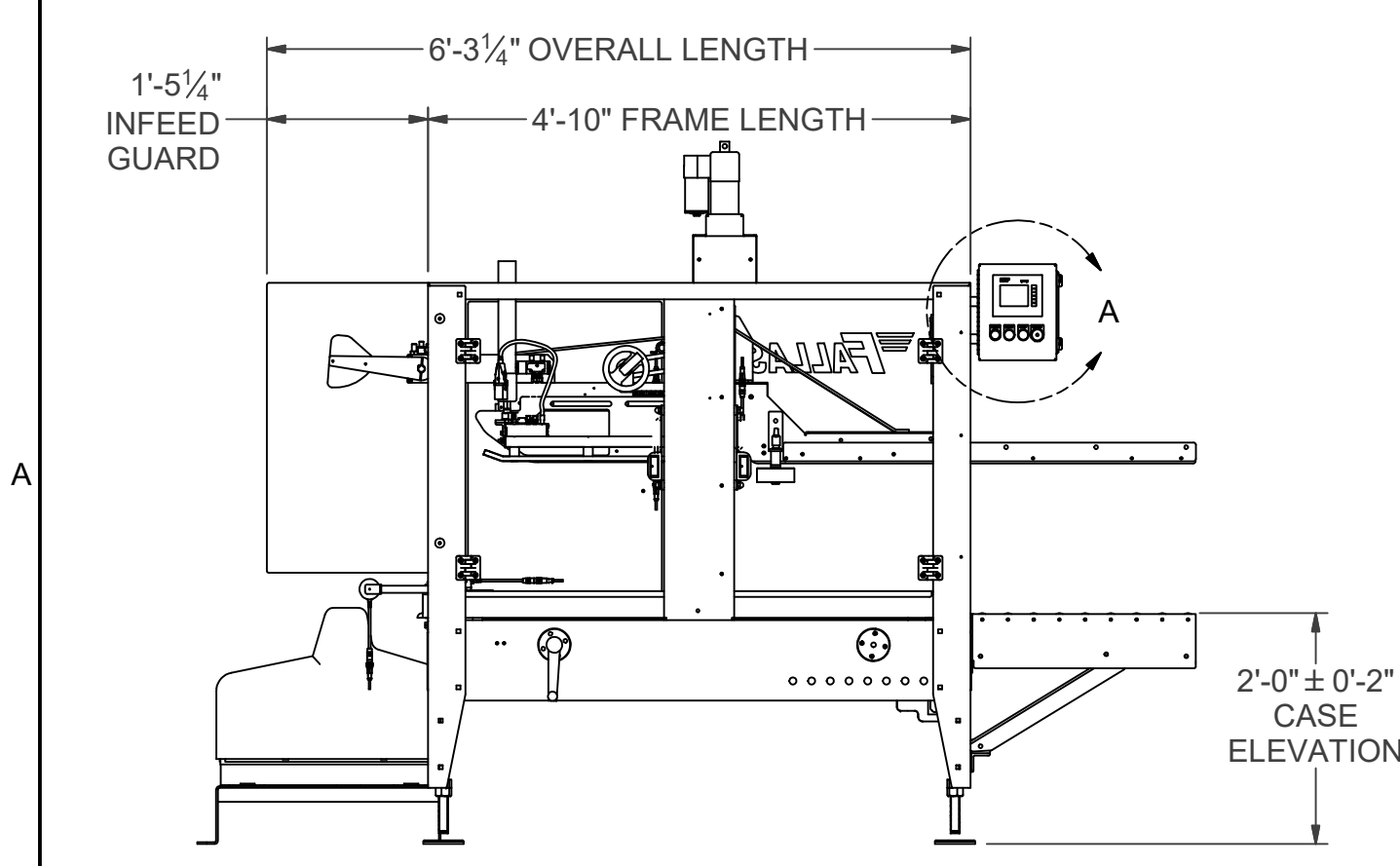
STANDARD SPECIFICATIONS FOR CS400-HM GLUE SEALER

CONSTRUCTION: STAINLESS STEEL WITH SS NEMA 4X ENCLOSURES
ELECTRICAL: 120 VAC, 1 PHASE, 60 Hz, FUSED @ 15 AMPS
MOTOR: 1/2 HP
PLC: AB MICROLOGIX 1400**
HMI: SCHNEIDER ELECTRIC 3" COLOR TOUCHSCREEN**
AIR: 1/2" INLET, 1 CFM @ 80 PSI
SPEED: UP TO 25 CASES PER MINUTE
 **OPTIONS AVAILABLE

GLUE UNIT: NORDSON PROBLUE
ELECTRICAL: 480 VAC, 3 PHASE, 60 Hz
AIR: 1/2" INLET, 1/2 CFM @ 80 PSI
 GLUE UNIT REQUIRES SEPARATE POWER AND AIR DROPS

CASE SIZE RANGE: OTHER SIZES AVAILABLE, CONSULT SALES
 LENGTH MIN = 10 MAX = 24
 WIDTH MIN = 6 MAX = 16
 HEIGHT MIN = 4 MAX = 12

FOR BEST CASE CLOSING THERE SHOULD BE A 1/8" GAP WHEN MAJOR FLAPS ARE FOLDED CLOSED TOGETHER



TOLERANCE UNLESS NOTED		FALLAS AUTOMATION	
DECIMAL X.XX = ±0.010 X.XXX = ±0.005	PROJECT BATCH 31	SCALE 1 / 20	DRAWN BY ACL DESIGNER ACL
FRACTIONAL $\frac{X}{X} = \pm \frac{1}{32}$	DESCRIPTION TOP FLAP CLOSER GLUE SEALER		
ANGULAR ±0.5°	DATE 11/09/20	MACHINE CS400-HM	SHEET NO. 2 of 2
REV	REV DESCRIPTION	REV BY	ECN